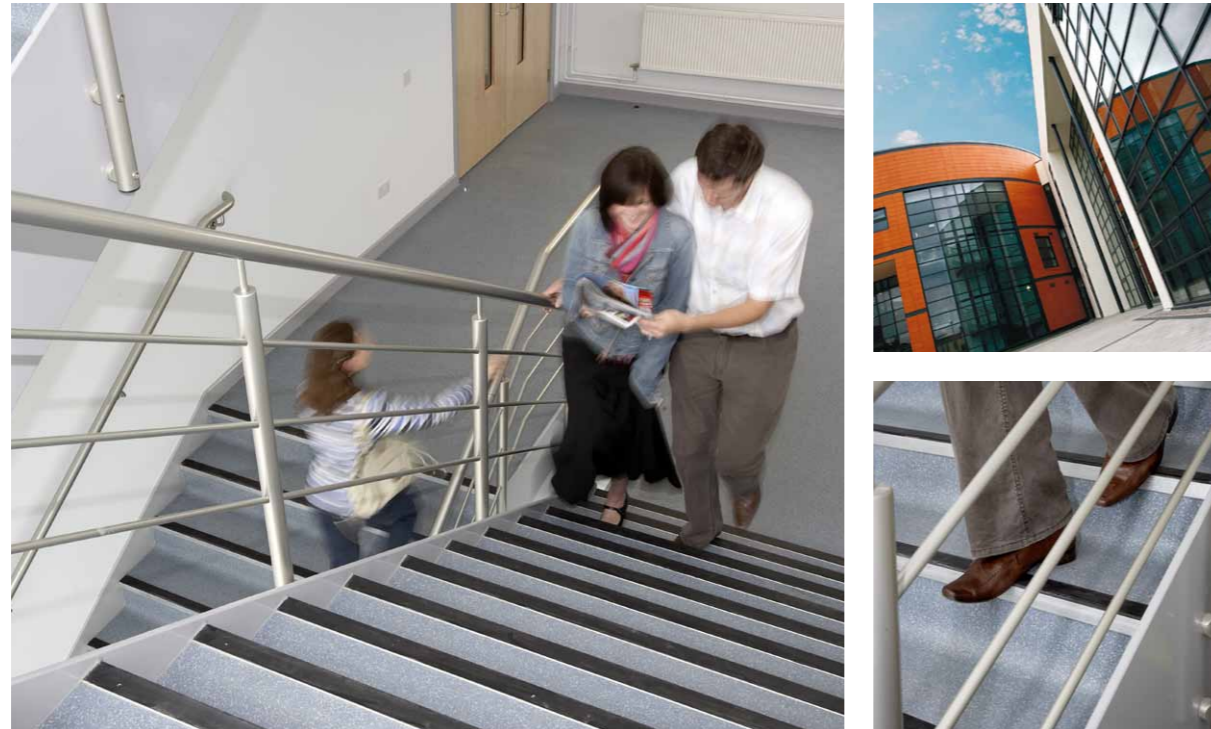


Accessories

Project: Macclesfield College of Further Education, Cheshire



“ Based on the recommendations from BRE and the guidance in The Building Regulations 2000 Approved Document M (ADM), the XT range features an extended insert design to provide additional slip-resistance around the leading edge of the stair edging. ”

Lynette Bowden
Marketing Manager

Gradus XT stair edgings were installed on three staircases within the college, a £20million redevelopment scheme, known as 'The Learning Zone'.

A profile from the Gradus aluminium A range stair edgings was originally specified for the project, however the college switched the stair edging to an XT profile in order to take advantage of the latest developments in stair edging design and performance.

Based on the recommendations from BRE and the guidance in The Building Regulations 2000 Approved Document M (ADM), the XT range features an extended insert design to provide additional slip-resistance around the leading edge of the stair edging, to ensure that foot contact is always made with the slip-resistant element of the stair edging. The range also incorporates 55mm treads and both 40mm and 55mm risers to meet ADM and BS8300:2009+A1:2010 guidelines.

Product Specified:

- Product Specified: [ASXT11 Stair Edging](#)
- Insert Colour Specified: Jet

